

# SURVEY & MAPPING SERVICES

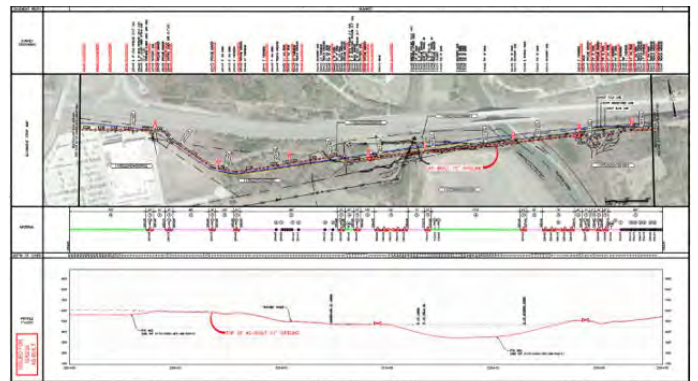


## PRECISION THROUGH EXPERTISE & ADVANCED TECHNOLOGIES

Audubon is a leading provider of geospatial data solutions—mapping, survey, geographic information system (GIS), and data management services—to the [oil and gas](#), [pipeline](#), and [utility](#) industries. Using the latest [geospatial technologies](#), our team of professionals executes efficient and accurate collection, analysis, and data mapping for new capital, relocation, conversion-of-service, and expansion projects. No matter the size and scope of your project, Audubon has the resources to meet your specifications and industry standards—on time and on budget.

### Capabilities

- › Preliminary pipeline, site, & facility surveys
- › As-built pipeline, site, & facility surveys
- › Hydrography surveys
- › Boundary & American Land Title Association (ALTA) surveys
- › Depth-of-cover surveys
- › Oil & gas lease boundary surveys
- › Encroachment surveys
- › Pipeline routing & field constructability reviews
- › Full GIS—data integration, online project management
- › Alignment sheets—issue for review, bid & construction, as-built
- › Horizontal directional drill (HDD) drawings
- › Certified plats & landowner exhibits for easement acquisition
- › Condemnation surveys & plats
- › Permit exhibits
- › Well location permitting
- › Well location / access road staking & unit surveys
- › Gathering & distribution system mapping
- › Federal Energy Regulatory Commission (FERC) Section 7(c) services
- › Unmanned aircraft system (UAS) drone mapping
- › 3D laser scanning
- › Above-ground marker (AGM) setting & pig tracking



*Professional Surveying and Engineering Services are only offered and performed in the states in which Audubon Field Solutions LLC or Audubon Engineering Company LP are licensed to offer or perform those services. Please contact us to obtain detailed licensing information and services offered by an Audubon Companies Entity.*