



# Hydrographic Survey Services

## Benefits

- Multidisciplinary approach that drives efficiency at every stage
- Cutting-edge geophysical technologies + software
- Accurate, precise measurements for informed decision-making
- Global footprint of qualified hydrographic surveyors for fast deployment
- 24/7/365 commitment to the industry's most rigorous QHSE protocols
- Expert insights to mitigate risks + improve ROI

## Accelerated, data-rich insights for project success

Connecting people with goods and services across continents requires a network of robust, secure infrastructure with ready access to the world's vast bodies of water—on the shore of a river, at a port near a sea, and even in the middle of an ocean thousands of feet from land. Planning, building, and maintaining infrastructure in and around water requires careful consideration of a range of issues, from seabed topography and water depth to environmental statutes and governmental regulations.

Audubon Companies specializes in planning and implementing multidisciplinary surveys for a range of industries and clients working in inland, estuarine, coastal, and offshore environments. Collaborating with you at every stage, our expert practitioners use cutting-edge hydrographic technologies to provide reliable data and actionable insights, so you can achieve safe, productive performance over the life of your asset.

Audubon can deliver hydrographic survey services either independently or in a customized suite depending on your project requirements and objectives. Every hydrographic survey we undertake utilizes state-of-the-art technologies to deliver accurate, near-real-time hydrographic survey data tailored to your individual needs.

- High-precision single- + multibeam echosounders
- Modern computing systems
- Specialized navigation-hydrographic software

# Broad portfolio of capabilities, integrated under one roof

## Navigable waterway crossings

Optimize proposed route crossings and identify potential problem areas with DOT OQ-compliant personnel for both gas and liquid lines.

## Pre- + postdredge

Efficiently and accurately calculate sediment volume, and achieve quality assurance for contract compliance.

## Shallow-water hazards

Identify potential hazards and adjust operational plans for maximum productivity and safety.

## Pipeline as-built + depth-of-cover

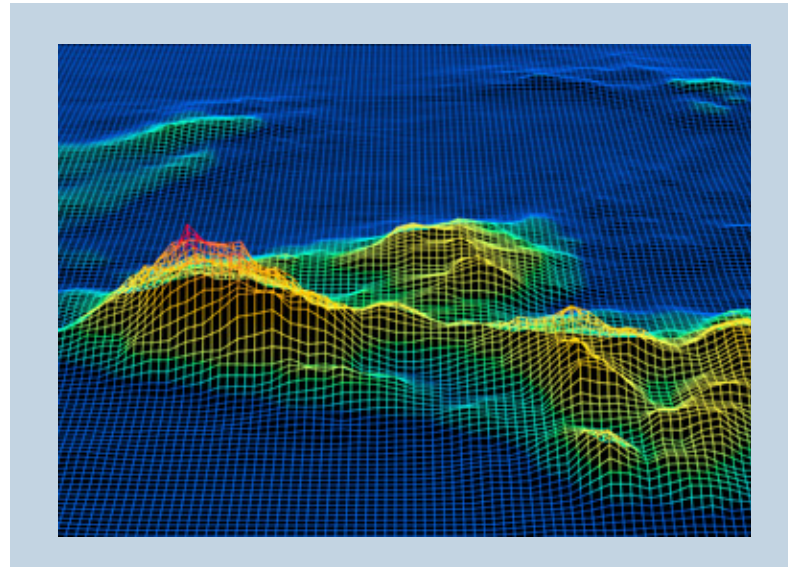
Save time and resources on coastal use permits with accurate burial depth, elevation, and backfill data.

## Proposed well locations

Expedite the well-marking process with environmental specialization and thorough mapping data and documentation.

## Side-scan + 360° sonar

See underwater features above the natural bottom, with special operations for shallow water. Explore, inspect, or delineate submerged structures, comply with marine insurance, locate objects, and track divers on the sea floor with ultrahigh-resolution Kongsberg MS1000 sonar data.



## Plugged + abandoned wells

Make informed decisions about reentry or geological basis of design while staying in regulatory compliance.

## Oil + gas drill sites

Reveal proposed or as-built access routes and configurations to assess damage, negotiate rights, optimize location, or boost returns from existing assets.

## Magnetometer

Detect metallic or ferrous material to make decisions about the lithographic, archaeological, and depositional nature of your project environment.